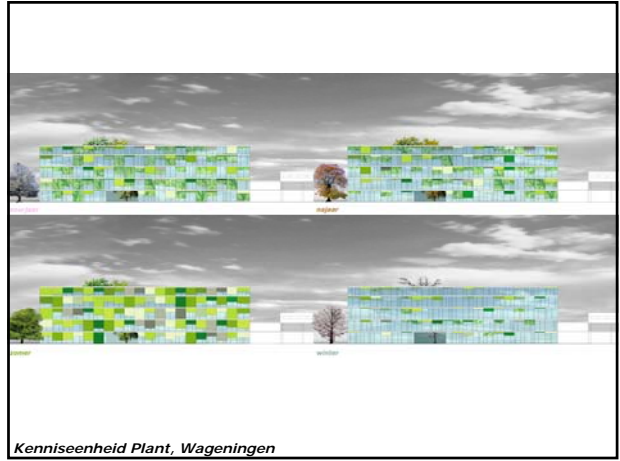
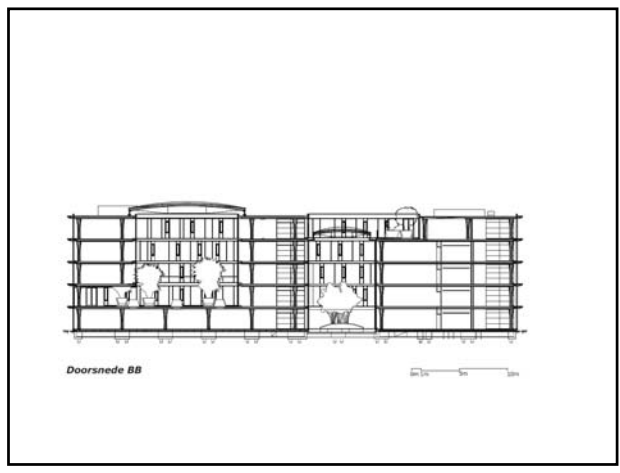
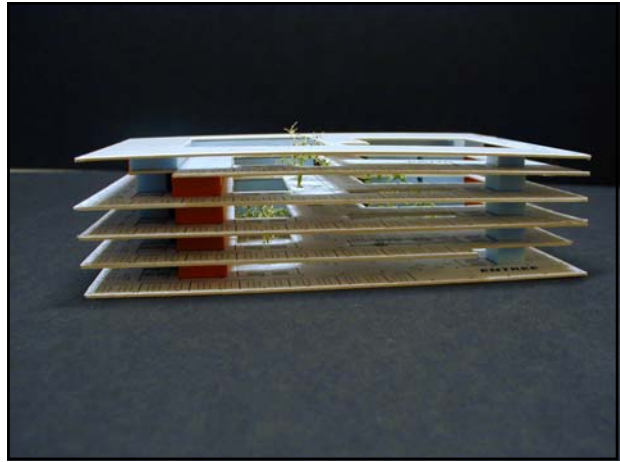


Group 1: 1, Wageningen

Architect: DP6 architectuurstudio, Chris de Weijer
Adviseur Duurzaam Bouwen: DGMR, Paul van Bergen
Adviseur Klimaatinstallaties: DWA, Arte Huisman
Constructeur: Pieters Bouwtechniek, Paul Rijpstra



Kenniseenheid Plant, Wageningen

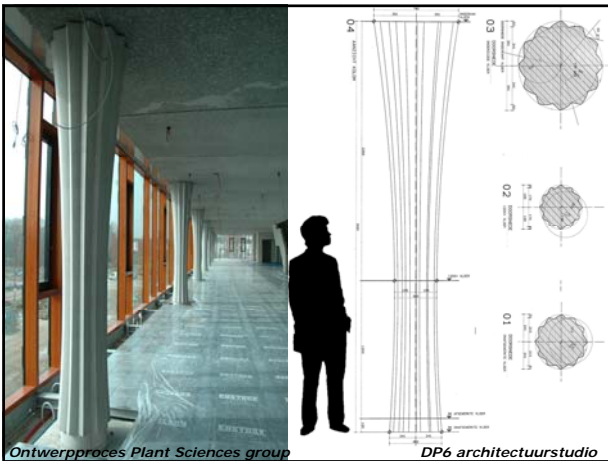




Ontwerpproces Plant Sciences group DP6 architectuurstudio



Ontwerpproces Plant Sciences group DP6 architectuurstudio



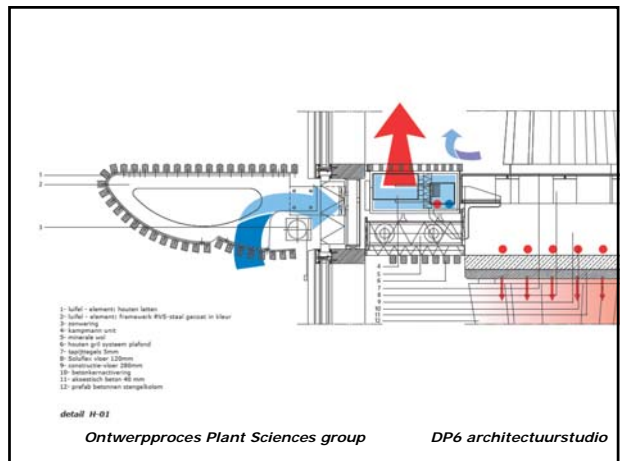
Ontwerpproces Plant Sciences group DP6 architectuurstudio



© Thermische schil



Ontwerpproces Plant Sciences group DP6 architectuurstudio



- 1- Lijst - aluminium houder betten
- 2- Lijst - aluminium framewerk 40x40 stevig gelast in lithium
- 3- glaswering
- 4- keramische afd.
- 5- mineralische wol
- 6- houten grill systeem plafond
- 7- houten grill systeem
- 8- isolatie vloer 125mm
- 9- betonvloer vloer 100mm
- 10- betonbalkvloering
- 11- betonbalk vloer 40 mm
- 12- profiel betonnen stangelsysteem

detail H-01

Ontwerpproces Plant Sciences group DP6 architectuurstudio

